

Bega Village



Bega Village is a high-quality, modern, sub-regional shopping centre that provides for the daily and weekly shopping needs of residents and surrounding towns. It is also the only sub-regional shopping centre within the trade area, securely anchored by a rare triple-major tenant profile.

The Leading Choice

The prominent fresh food and convenience-based shopping destination, Bega Village has 23 tenants including; Woolworths, Big W, Dan Murphy's, Specsavers, Platypus, Cotton On, Telstra, Bonds Outlet and Sushi Sushi.





Location

Centrally located in the Bega Town Centre, the Centre is easily accessible to not only the population of Bega but also those in the wider region.

Our Brands



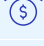




CENTRE SNAPSHOT

	14,398m ² GLA
	\$100.6 million MAT sales
	\$8,710 specialty MAT PSM
	2 major retailers (Woolworths, Big W)
	580+ car spaces

*Figures as at November 2025 and are correct at time of publishing.

CUSTOMER SNAPSHOT

	39,920 MTA population (2021)
	13,730 primary trade area population (2021)
	\$69,619 MTA average household income
	\$647.1m MTA retail spending (2021)
	2.9% per annum projected growth in retail spend to 2036

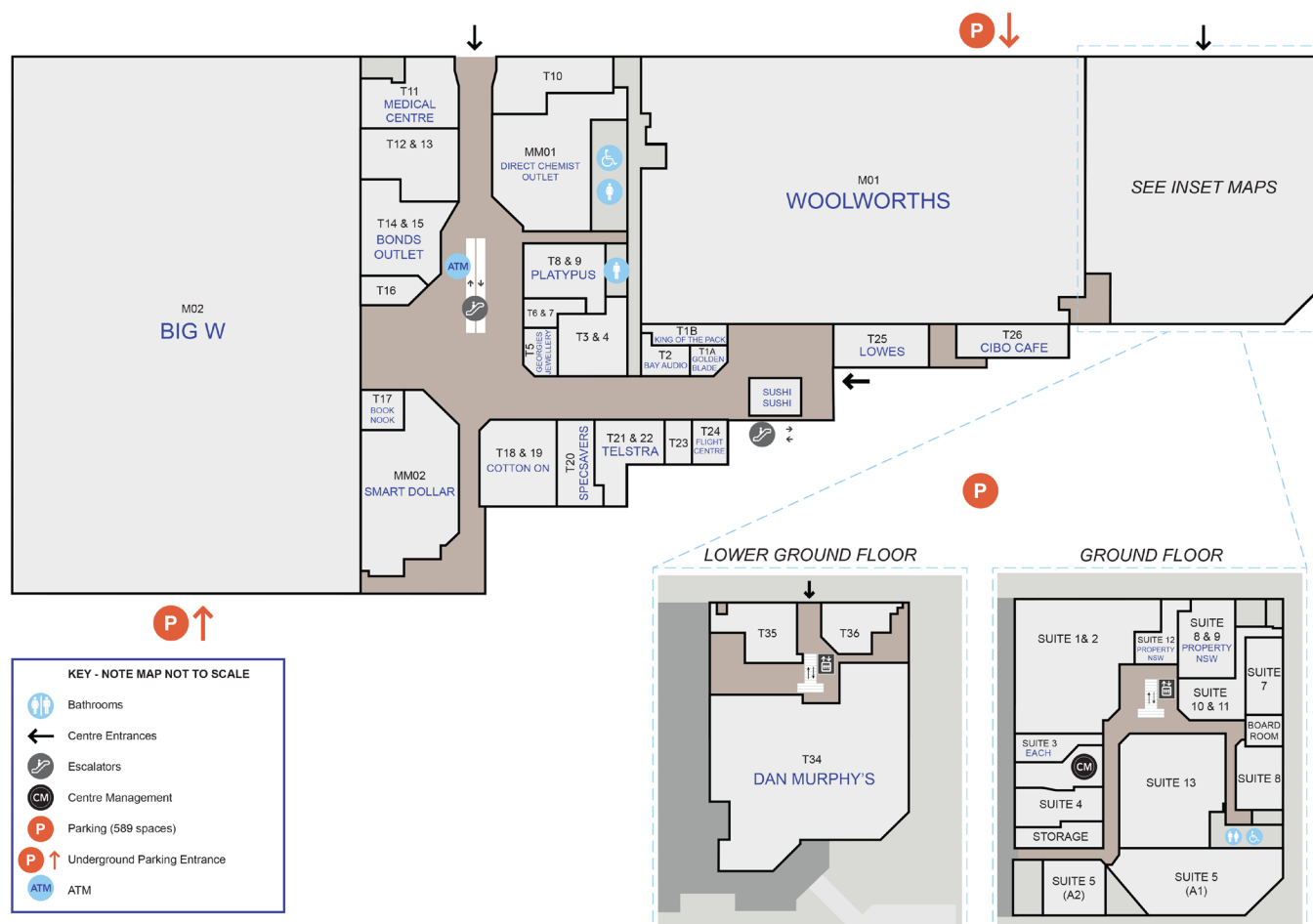
SOURCE: Bega Trade Area Analysis. Location IQ. Prepared March 2022.

LEASING CONTACTS

Kieran Donohoe
0401 210 538
kieran.donohoe@mafinancial.com

Scott Evans
0466 150 328
scott.evans@mafinancial.com

Centre directory



The information contained in this document is a guide only and has been prepared based on the information available to the centre owner and MA Financial Group as at the date of its publication. Neither the centre owner nor MA Financial Group (nor their agents or any person employed by them) warrant that the information in this document is accurate or complete. Further, neither the centre owner nor MA Financial Group (nor their agents or any person employed by them) have any obligation or other duty to inform you of any inaccuracy or incompleteness of the information in this document which may subsequently come to their attention. The document does not provide any predictions as to future events or outcomes and does not constitute a lease offer or warranty as to the profitability, design or layout of the centre. MA Financial Group may in its absolute discretion vary or amend this document (including without limitation by modifying, adding or removing any information (including any measurements and monetary amounts) in this document) at any time and without notice to you.

You should carry out your own investigations and satisfy yourself with regards to the matters referred to in the preceding paragraph and obtain independent legal, financial and business advice before making any decision or entering into any agreement arrangement concerning the subject matter of this document or the centre. Neither the centre owner nor MA Financial Group (nor their agents or any person employed by them) accept any responsibility for: (a) any consequence resulting either directly or indirectly from a person relying or acting upon the information contained in this document; (b) the accuracy or completeness of such information; or (c) any consequence arising from your decision to enter into a legally enforceable agreement or arrangement with the centre owner. You may not copy or use any part of this document without express written consent of MA Financial Group. Any monetary amounts are expressed in Australian dollars unless otherwise stated. Rates are subject to change without notification.



106 Auckland Street
Bega, NSW, 2550
www.begavillage.com.au